



# Rugged Mobile Computer PT21 / PT26

**BMK**

*Portable Innovation Technology*  
The Power Behind Your Rugged Mobile Computing

# Application

If you are looking for a mobile computer that you can collect data for a whole day, your search is over. PT21 / PT26 is the answer to your request. It is just about 275g (normal battery), long battery life, big screen (3.2" diagonal) and yet comfortably to hold .

The PT21 / PT26 mobile computer is a neat package that packs with functions your customers needed in major industries, namely retail, healthcare, warehouse tracking and logistics. It is rugged (IP64 and 1.2 meters drop), fully connected (Bluetooth, WiFi b/g/n, WWAN) and has various options that you can customize for your customers' needs (multiple scan engines and OS support).



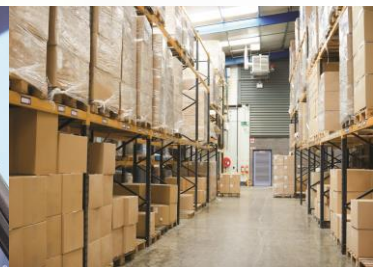
***Retail***



***Healthcare***



***Warehouse tracking***



***Logistic***

# Rugged yet ergonomic



Reinforced polycarbonate structure meets the IP64 protection class and withstands 1.2m – 1.5m drops multiple times across wide range of temperature per MIL-STD 810G standard.



Big color display (3.2 color QVGA TFT) and yet comfortably grabbed by users perfect balance.



Perfect balance of weight with normal and 2x capacity battery.



Rubber sealing prevents the ingress of dust and water to meet IP64 standard.





# Collecting data while stay connected



Multiple scanning technology supported.  
CMOS Imager, CCD, Laser scanner.



Bluetooth wireless communication for  
connecting other Bluetooth enabled  
peripherals e.g. mobile printers.



IEEE 802.11b/g /n (2.4GHz) radio supported.



PT26 provides WWAN (HSDPA / WCDMA /  
EDGE / GPRS data communication only)  
radio option enables wide rang of field  
based applications



Bottom connector with serial, USB and  
power output (+5V) for communication of  
external accessories.

# Flexible options for your customers



Optional 1D CCD / 1D Laser / 2D CMOS imager to fit customers' needs.



Optional radio options (WLAN, WWAN, MiFARE) to fit customer's needs and budgets.



Support Android 4.x.



Default numeric or customized keypad according to customers' requirements.



512MB RAM / 4GB Flash with up to 32G Micro-SD card support.



Bottom connector with serial, USB and power output (+5V) allowing future expansion modules.

# PT21 Specifications



## Physical

<b>Dimensions:</b>	148 mm(L) x 73 mm(W) x 27.5 mm(D)
<b>Weight:</b>	Standard battery: 254g
<b>Display:</b>	3.2 inch full QVGA (240x320) TFT display with backlight
<b>Touch Panel:</b>	Glass analog resistive touch
<b>Backlight:</b>	LED backlight
<b>Battery:</b>	Rechargeable Lithium Standard: 3.7 V, 2880mAh Extended: 3.7V, 3840mAh
<b>Expansion:</b>	MicroSD slot
<b>Connectivity:</b>	Full speed USB
<b>Warning:</b>	Vibrate and LED
<b>Keyboard:</b>	26-key numeric in English
<b>Audio:</b>	Speaker

## Performance characteristics

<b>CPU:</b>	Cortex A8 1GHz processor
<b>Operating system:</b>	Android 4.1.2
<b>Memory:</b>	512MB RAM, 4GB Flash
<b>Interface:</b>	3V UART, USB 2.0 Client

## User Environment

<b>Operating Temperature:</b>	-10°C to 55°C
<b>Storage Temperature:</b>	-20°C to 60°C (w/o battery)
<b>Humidity:</b>	90% non-condensing
<b>Drop Spec:</b>	1.5 meters to concrete, multiple drops across wide range of temperature per MIL-STD 810G standard
<b>Sealing:</b>	IP64
<b>Clock:</b>	Integrated real time clock
<b>Electrostatic Discharge (ESD) :</b>	±15 kV (air discharge), ±8 kV (direct discharge)

## Wireless PAN Data

**Bluetooth:** Class II EDR 2.0; internal antenna

## Wireless LAN Data

<b>WLAN Radio:</b>	IEEE 802.11 b/g/n (all 2.4GHz)
<b>Data Rates Supported:</b>	1,2,5.5,6,9,11,12,18,24,36,48 and 54Mbps
<b>Operating Channels:</b>	Channels 1-13 (2412-2472 MHz)
<b>Transmission Power:</b>	30mW (transmit) (line of sight open field test: 300 meters at 1 Mega bits per second)
<b>Security:</b>	WEP (40 or 128 bit), TKIP, AES, WPA2-PSK, WPA-PSK, WPA2 (EAP-TLS, EAP-PEAP)
<b>Antenna:</b>	Internal

## Data Capture Specifications

**Options:** 1D CCD Scanner  
1D Laser Scanner  
2D Imager

## ACCESSORIES



Single Slot Dock



Power Adapter



Charging cup kit



Stylus



Hand strap



2X 3840mAh  
Lithium Polymer Battery  
and  
2x battery cover

# PT26 Specifications



## Physical

<b>Dimensions:</b>	148 mm(L) x 73 mm(W) x 27.5 mm(D)
<b>Weight:</b>	Standard battery: 275g
<b>Display:</b>	3.2 inch full QVGA (240x320) TFT display with backlight
<b>Touch Panel:</b>	Glass analog resistive touch
<b>Backlight:</b>	LED backlight
<b>Battery:</b>	Rechargeable Lithium Standard: 3.7 V, 2880mAh Extended: 3.7V, 3840mAh
<b>Expansion:</b>	MicroSD slot
<b>Connectivity:</b>	Full speed USB
<b>Warning:</b>	Vibrate and LED
<b>Keyboard:</b>	26-key numeric in English
<b>Audio:</b>	Speaker

## Performance characteristics

<b>CPU:</b>	Cortex A8 1GHz processor
<b>Operating system:</b>	Android 4.1.2
<b>Memory:</b>	512MB RAM, 4GB Flash
<b>Interface:</b>	3V UART, USB 2.0 Client

## User Environment

<b>Operating Temperature:</b>	-10°C to 55°C
<b>Storage Temperature:</b>	-20°C to 60°C (w/o battery)
<b>Humidity:</b>	90% non-condensing
<b>Drop Spec:</b>	1.2 meters to concrete, multiple drops across wide range of temperature per MIL-STD 810G standard
<b>Sealing:</b>	IP64
<b>Clock:</b>	Integrated real time clock
<b>Electrostatic Discharge (ESD) :</b>	± 15 kV (air discharge), ± 8 kV (direct discharge)

## Wireless PAN Data

**Bluetooth:** Class II EDR 2.0; on-board chip antenna

## Wireless WAN Data

<b>WWAN Radio:</b>	GPRS / EDGE / WCDMA / HSDPA
<b>Frequency:</b>	GPRS / EDGE (850, 900, 1800, 1900MHz), HSDPA / WCDMA (900, 2100MHz) data only

## Wireless LAN Data

<b>WLAN Radio:</b>	IEEE 802.11 b/g/n (all 2.4GHz)
<b>Data Rates Supported:</b>	1,2,5.5,6,9,11,12,18,24,36,48 and 54Mbps
<b>Transmission Power:</b>	30mW (transmit) (line of sight open field test: 300 meters at 1 Mbps)
<b>Antenna:</b>	Internal for WLAN

## Data Capture Specifications

**Options:** 1D CCD Scanner  
1D Laser Scanner  
2D Imager

## ACCESSORIES



Single Slot Dock



Power Adapter



Charging cup kit



Stylus



Hand strap



1.5X 2880mAh  
Lithium Polymer Battery  
and  
1.5X battery cover



## Rugged Mobile Computer PT21 / PT26

**BMK**

BARCODE MARKET, C/ Mont 58, 08340 Vilassar de Mar, Barcelona  
93.180.86.49 \* [www.barcode-market.com](http://www.barcode-market.com)  
NIF: 465788335

**BMK**